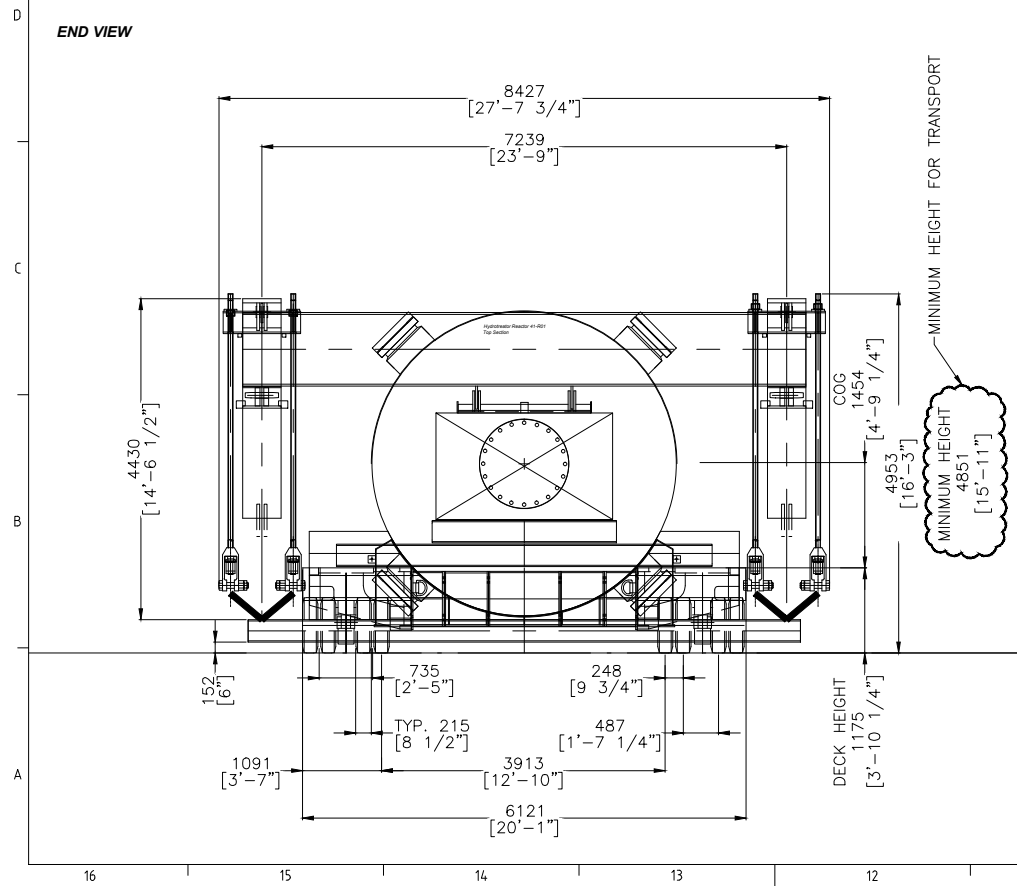
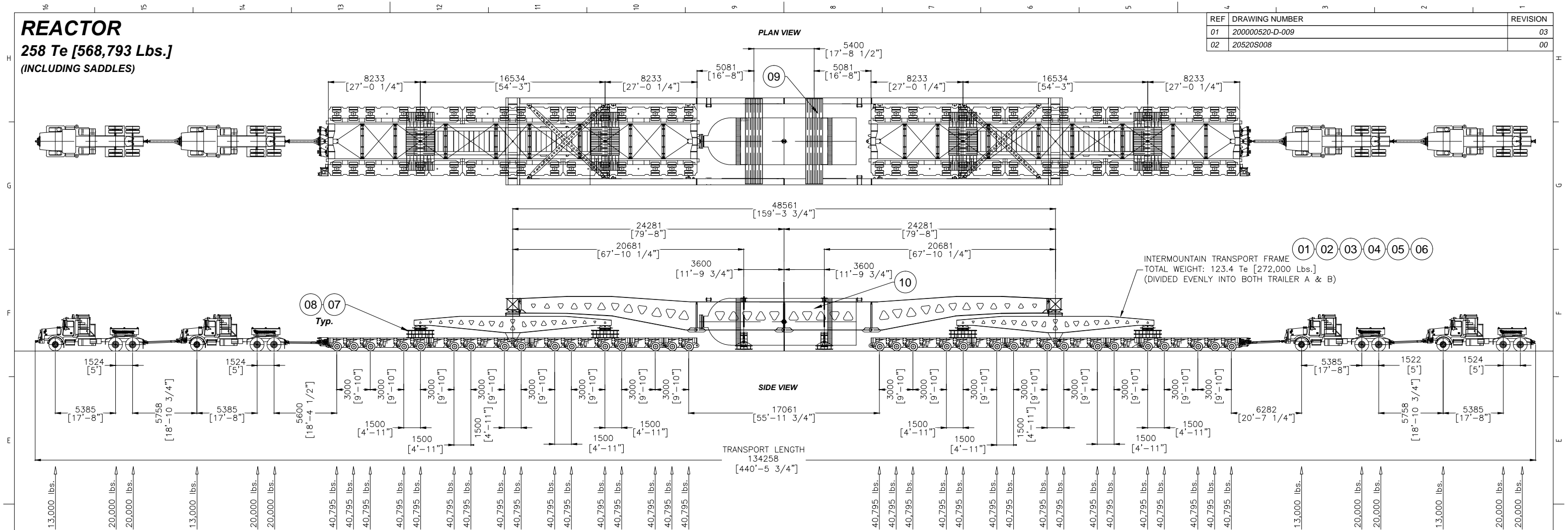


REACTOR
258 Te [568,793 Lbs.]
(INCLUDING SADDLES)

REF	DRAWING NUMBER	REVISION
01	200000520-D-009	03
02	20520S008	00



MATERIALS LIST						
POS	QTY	DESCRIPTION	MATERIAL/ CAPACITY	DIMENSIONS	WEIGHT (lbs / ea)	
01	4	Intermountain Frame Necks		52'-0"		
02	6	Intermountain Mid. Sections		25'-8"		
03	2	Intermountain Header Beams		25'-6"		
04	2	Intermountain Loadspreaders		57'-11"		
05	8	Intermountain Long Cross Bracing		30'-4"		
06	4	Intermountain Short Cross Bracing		21'-4"		
		Intermountain Frame Total Weight:				272000
07	2	Steel mats 8'		8'-4" x 8'-1" x 1'	4520	
08	8	Steel mats 17'		17' x 4'-1" x 1'	4610	
09	2	Hanger Steel Mats 25'		25' x 4' x 1	6454	
10	4	Auxiliary Hanger Equipment			2000	
		Grand Total:				338828

LOAD DESCRIPTION:		Reactor (Top)	
VEHICLE DESCRIPTION:		[2x] 20' 16 L Road Style Goldhofer w_ Frame	
UNITS:	METRIC		ENGLISH
LOAD WEIGHT:	258.0 Te	568,793 lbs	
SADDLE WEIGHT:	0.0 Te	0.0 lbs	
FRAME WEIGHT:	153.7 Te	338,828 lbs	
TURNTABLE WEIGHT:	0.0 Te	0.0 lbs	
TRUCK WEIGHT:	96.2 Te	212,000 lbs	
TRAILER WEIGHT:	180.4 Te	397,810 lbs	
TOTAL WEIGHT:	688.3 Te	1,517,431 lbs	
LOAD/LINE	18.5 Te	40,795 lbs	
LOAD/ AXLE	9.3 Te	20,397 lbs	
LOAD/WHEEL	2.31 Te	5,099 lbs	
LOAD/LAT. INCH	0.3 Te	599 lbs	

GENERAL NOTES	
1	FIELD VERIFY ALL DIMENSIONS
2	THE CLIENT IS RESPONSIBLE FOR THE STRUCTURAL INTEGRITY OF THE LOAD TO BE TRANSPORTED.
3	THE CLIENT IS TO IDENTIFY AND CONFIRM THE SUITABILITY OF THE SUPPORT POINTS TO BE UTILIZED DURING THE TRANSPORT OF THE LOAD.
4	SECURE CARGO ONTO THE TRAILER USING LASHING MATERIAL TO PREVENT SLIDING AND/OR TIPPING OFF THE LOAD.
5	ALL CHAINS GRADE 70, 1/2" 11,300 lbs. CAPACITY (SINGLE) AND TIGHTENED WITH BINDERS (NOT SHOWN) 13,000 lbs. CAPACITY.
6	3/4" PLYWOOD OR ANTI SLIP MATERIAL TO BE USED BETWEEN ALL STEEL CONTACT AREAS TO PROMOTE FRICTION.
7	MAXIMUM WEIGHT AND DIMENSIONS SHOWN FOR REACTOR TRANSPORT
8	SUBJECT TO FINAL ENGINEERING

FOR PERMIT

00	First Issue	11/11/13	JLaw 940062		TSad 940447	
REV.	DESCRIPTION:	DATE:	DRAWN:	CHECKED:		

Without authorized signatures this document is uncontrolled, not binding and for indicative purposes only.

CLIENT: **CH2M HILL / Calumet Montana Refining**

PROJECT: ***Great Falls, Montana***

TITLE: ***Permit Transport of Reactor
with [2x] 20' 16 L Road Style Goldhofer w_Frame***



MAMMOET USA
20525 FM 521, Rosharon, TX 77583
Tel. +1 (281) 369-2200 / Fax. +1 (281) 369-2178
www.mammoet.com

IN ANY FORM OR BY ANY MEANS, WITHOUT THE
PRIOR WRITTEN PERMISSION OF THE PUBLISHER.
© 2000 MAMMOET [CQSP-02-01-01]

SCALE: NTS	SIZE: D	DRAWING NUMBER					
SAP No:		PROJECT No:	SUB:	DOC:	PART:	SHT	REV

7000109541	15010242 - P188 - D- T12 - 1/1 - 00
------------	-------------------------------------