

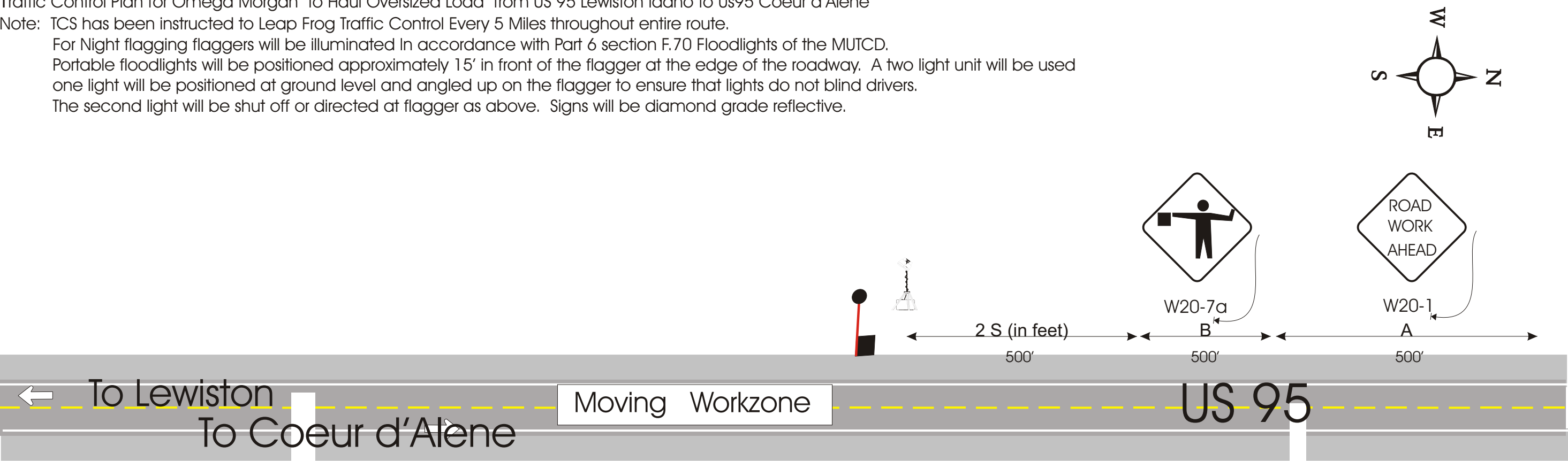
Traffic Control Plan for Omega Morgan to Haul Oversized Load from US 95 Lewiston Idaho to Us95 Coeur d'Alene

Note: TCS has been instructed to Leap Frog Traffic Control Every 5 Miles throughout entire route.

For Night flagging flaggers will be illuminated In accordance with Part 6 section F.70 Floodlights of the MUTCD.

Portable floodlights will be positioned approximately 15' in front of the flagger at the edge of the roadway. A two light unit will be used one light will be positioned at ground level and angled up on the flagger to ensure that lights do not blind drivers.

The second light will be shut off or directed at flagger as above. Signs will be diamond grade reflective.



Owner		
Omega Morgan		
Project Name		Project Number
US 95 Lewiston to Coeur d Alene		
Prime Contractor		Traffic Control Contractor
Omega Morgan		Red Wolf Traffic Control
Phone	Sheet Number	Date
(208) 791-1166	1 of 1	Oct. 2, 2013
Prepared By		
Arlene Ellenwood		